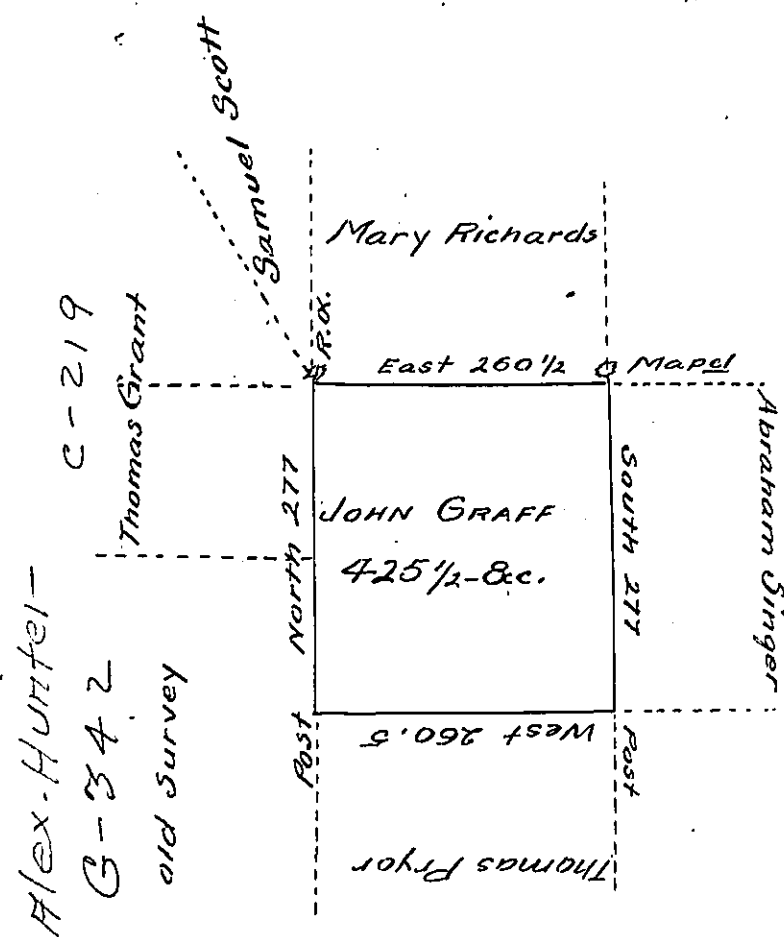


X



A Draft of a Tract of Land called — situate &c. adjoining land surveyed for Abraham Singer in Luzerne County containing Four-Hundred & twenty five Acres & an half & allowance surveyed the 3<sup>rd</sup> Day of September 1793 for John Graffe by Virtue of a Warrant dated the first Day of March 1793.

W<sup>m</sup> Gray D.S.

To Daniel Broadhead Esq<sup>r</sup>  
Surveyor Gen<sup>l</sup>

IN TESTIMONY that the above is a copy of the original remaining on file in the Department of Internal Affairs of Pennsylvania, made conformably to an Act of Assembly approved the 16th day of February, 1833, I have hereunto set my Hand and caused the Seal of said Department to be affixed at Harrisburg, this Ninth day of January 1905

*James D. Brown*  
Secretary of Internal Affairs.